

SHELTER
HOUSING
SOCIAL SERVICES

BISHOP SWING COMMUNITY HOUSE

“The answer to homelessness is a home.”

THE RT. REV. WILLIAM E. SWING
RETIRED EPISCOPAL BISHOP

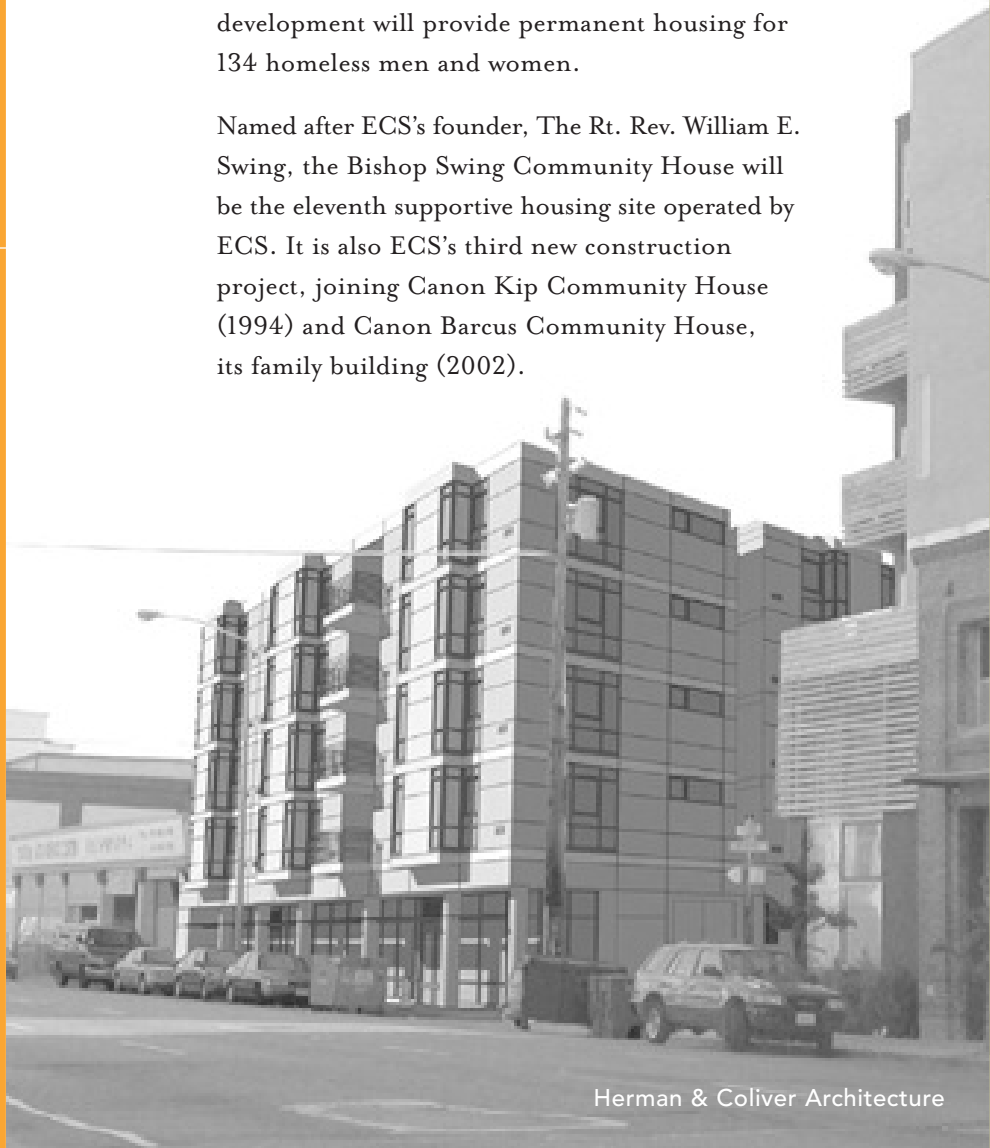
Breaking Ground

THIS FALL, ECS WILL break ground on its newest facility, the Bishop Swing Community House, at 275 Tenth Street in San Francisco. When completed, development will provide permanent housing for 134 homeless men and women.

Named after ECS’s founder, The Rt. Rev. William E. Swing, the Bishop Swing Community House will be the eleventh supportive housing site operated by ECS. It is also ECS’s third new construction project, joining Canon Kip Community House (1994) and Canon Barcus Community House, its family building (2002).

STRATEGIC INITIATIVES TO END HOMELESSNESS

ECS mobilizes very low-income individuals and families to overcome homelessness within a safe, supportive environment. Our comprehensive programs — from shelters, supportive housing and employment training to counseling, educational services, senior services and childcare — are designed to help people develop the skills to find and maintain permanent housing.



Dear Friends,

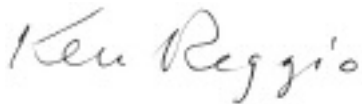
AFFORDABLE HOUSING is not built by one person or one organization, but rather through an intensely collaborative process. Individuals, city government, the business community, and numerous nonprofits come together to develop housing solutions for low-income people. The outcome of such effort is extraordinary — a better community for all.

Bishop Swing Community House will be just such an effort. Permanent supportive housing is a win-win situation resulting in much needed new housing stock for the City, a visually appealing building for the neighborhood, homes for those who don't have any, and case management support to help keep people housed and productive.

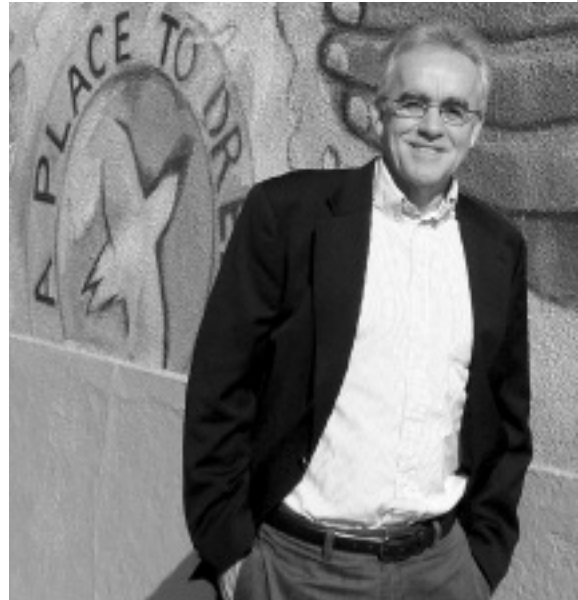
While ECS and Bishop Swing Community House rely also on government grants for basic support, private revenue is crucial to our operations. Without the financial support of individuals, foundations, and corporations, ECS would be unable to continue the comprehensive services for homeless people for which it is highly respected in the community.

Thank you for your ongoing commitment and generosity, and please join us when we break ground on September 20th.

Sincerely,



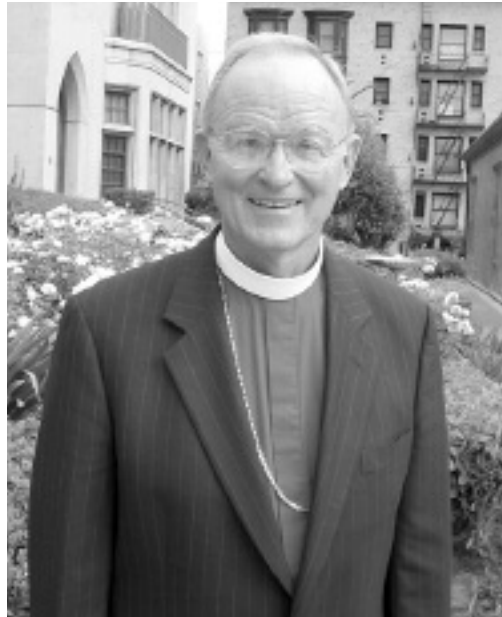
Kenneth J. Reggio
Executive Director



Bishop Swing and ECS:

A Future Free of Homelessness

WHEN MAYOR Dianne Feinstein approached Bishop Swing for his help with the “temporary” problem of homeless in San Francisco, he didn’t shrink from the issue, but in his typical fashion, dealt with it head-on. Grace Cathedral’s Gresham Hall was immediately requisitioned as a homeless shelter. When it became clear that more space was needed, Bishop Swing found a sanctuary for homeless clients South of Market, eventually finding permanent space in a remodeled bathhouse at the corner of Eighth and Howard. The Sanctuary, housing 200 people each night, remains a beacon for homeless people within the city.



Today, with Bishop Swing’s support and that of his very able successor, Bishop Marc Andrus, ECS continues its outreach and support to San Francisco’s most vulnerable

people. ECS’s programs include emergency shelter for 500 people each night and housing for more than 1,000 formerly homeless men, women, and children in 10 supportive housing sites. In addition, ECS has a thriving program for the elderly. Canon Kip Senior Center serves a hot meal every day of the year and provides critical case management support. The Skills Center rounds out ECS’s programs with academic classes, vocational training, and guidance for homeless and formerly homeless adults.

Bishop Swing Community House
Dore Alley Elevation



Creating a Green Building

Bishop Swing Community House is a participant in the well-respected Leadership in Energy and Environmental Design (LEED) Homes Pilot Program. The LEED certification is a nationally accepted benchmark for the design, construction, and operation of high performance green buildings. LEED endorses an approach to sustainable building that includes five areas of environmental health: sustainable site development, water savings, energy efficiency, materials used, and indoor environmental quality.

ECS's participation in the LEED for Homes Program was made possible by a grant from the Green Communities Initiative, a partnership of the American Planning Association, the Enterprise Foundation, The Natural Resources Defense Council, and the American Institute of Architects. The Green Communities Initiative brings together funders, developers, community stakeholders, and green building professionals for intense working sessions in an effort to incorporate green design principles into affordable housing design.

A Perfect Miniature

Although each unit at Bishop Swing Community House, in keeping with building regulations regarding Single Room Occupancy (SRO) apartments, will be just under 350 square feet, it is wonderfully appointed. Every unit will have its own full bath, a mini-kitchen with a small stove plus a full-size refrigerator, and a living/sleeping room with a large window and closet.

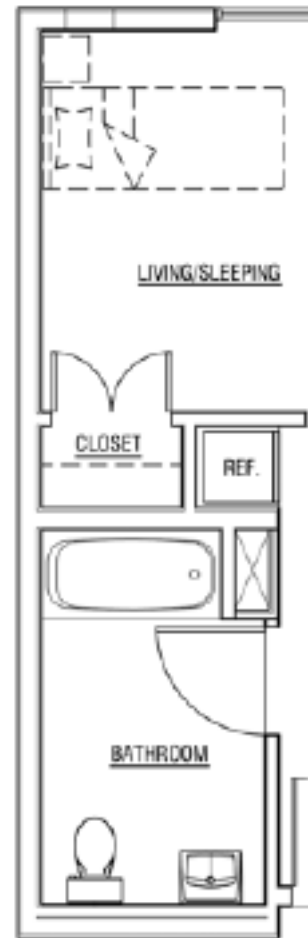
Careful Stewardship

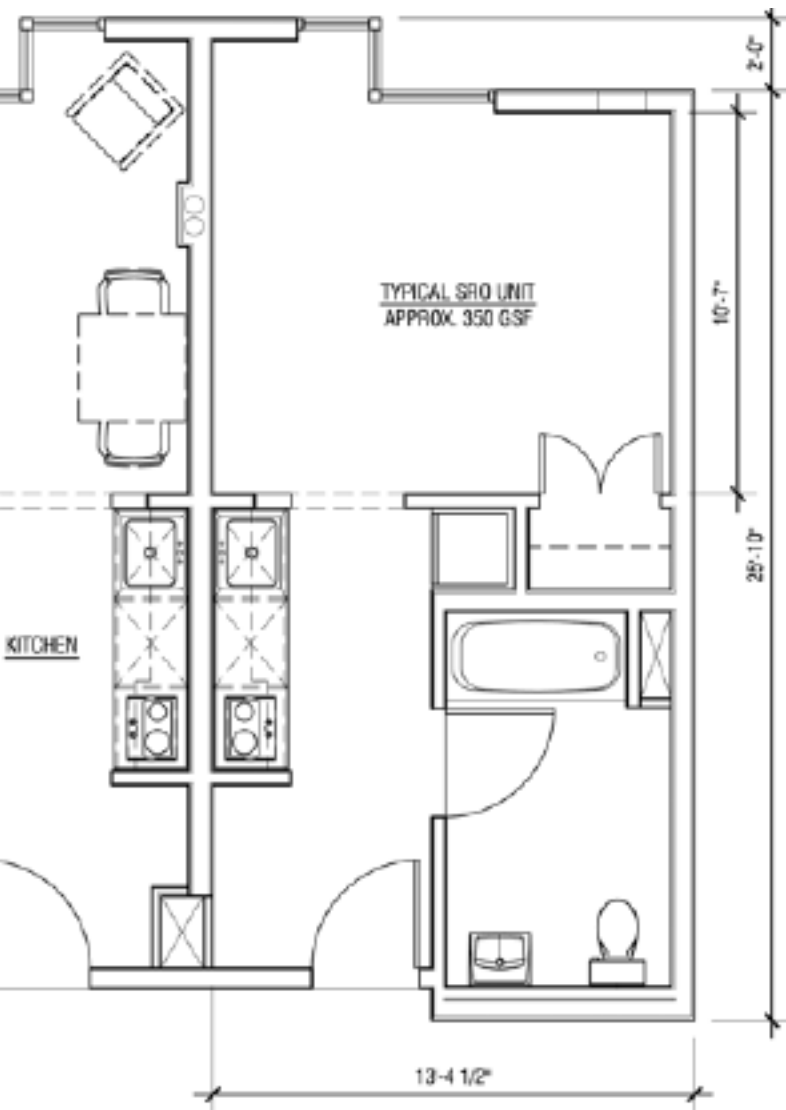
While ECS and Bishop Swing Community House will always need community support to augment ongoing operations, creating a supportive housing apartment complex requires a collaborative public-private funding partnership.

City sources include the San Francisco Redevelopment Agency, which acquired the property for ECS's use, and major funding from the Mayor's Office of Housing, which prioritizes supportive housing as a key ingredient in the City's plan to eliminate chronic homelessness. The state of California has committed extensive resources to the project through its Multi-Family Housing Program and, as with Canon Kip and Canon Barcus, ECS will bring in a tax-credit partner to complete the development funding.

Time, Talent, Treasure: How you can make a difference at ECS

While ECS utilizes government contracts to provide basic funding, support from individuals is crucial to fully operate its programs. Here's what you can do:





Give regularly.

Ensure ECS's ongoing viability by committing to a monthly financial contribution. Even a small amount, given each month, can add up to big results. Go on-line to www.ecs-sf.org and click on the "donate now" button and follow the directions. You may also contact Helena Lukas at 415-487-3736 or hluкас@ecs-sf.org.

Volunteer.

ECS has remarkable volunteer opportunities. If you are interested in volunteering at any of ECS's programs, contact Leah Cerri at 415-487-3348 or lcerri@ecs-sf.org.

Planned Giving.

Designate ECS as a beneficiary of your IRA, 401(k), or 403(b) retirement plan. For more information on these or other planned giving options, contact Ken Reggio at kreggio@ecs-sf.org or 415-487-3715.

EPISCOPAL COMMUNITY SERVICES BOARD OF DIRECTORS

The Rt. Rev. Marc Handley Andrus, Chair

Episcopal Bishop, Diocese of California

Pablo Wong, President

Senior VP, Market Development, Fidelity National Title Group

Ted Chambers, Vice President-Secretary

Retired, HR Consultant

Yvonne L. Tatsuno, Vice President-Treasurer

Controller, Synarc, Inc.

David Chin — Partner, Novani

Todd Clayter — Developer, Em Johnson Interest

Michael Coholan — Financial Planner, Hilltop Advisors, LLC

Walter T. Conway, Jr. — Business Consultant

Tracy Dearman — President, Haight Street Mortgage

Sedge Dienst — Principal, KCA Partners

Alan Fox — CFO, Saint Francis Hospital

The Rev. Vanessa Glass — Associate Pastor, Grace Cathedral

William Harris — CFO, Lurie Management LLC

James Hickman — VP, Communications, Institute for OneWorld Health

Christine Hoberg — Retired Finance Executive

Dr. Martin C. Jones — Program Coordinator, SF Sheriff's Dept.

Jenisel Jordan — Benefits Coordinator, Dolby Laboratories

Frederic Knapp — Principal, Frederic Knapp Architect

Soo-Ah Landa — Director of Global Sourcing, Williams-Sonoma

Kenneth J. Reggio — Executive Director, ECS

Delbert Scott — Retired Jeweler

Richard Springwater — Principal, Prado Group

EXECUTIVE STAFF

Kenneth J. Reggio, ACSW — Executive Director

Kelly Wilkinson — Associate Director

Linzie Coleman — Director of Shelters

Lolita Kintanar — Director of Senior Programs

Kevin Sharps — Director of Housing

Lisa Stringer — Director of the Skills Center

Melanie Johnson — Chief Financial Officer

Phil Clark — Housing Development Manager

David Medina S. — Director of Human Resources

Consulting editor: Judi Mason Haller

EPISCOPAL COMMUNITY SERVICES

165 Eighth Street, 3rd floor

San Francisco, CA 94103

415-487-3300 fax: 415-252-1743

www.ecs-sf.org

ECS

Episcopal Community Services

165 EIGHTH STREET
SAN FRANCISCO, CA 94103

NON-PROFIT
U.S. POSTAGE
PAID
SAN FRANCISCO, CA
PERMIT NO. 1036

**Bishop Swing Community House
groundbreaking: September 20, 2007.
Check www.ecs-sf.org for details.**

WHAT'S INSIDE:

Bishop Swing Community House:
Breaking Ground

Bishop Swing and ECS:
A Future Free of Homelessness

Creating a Green Building

From the Desk of
the Executive Director

